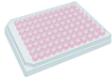
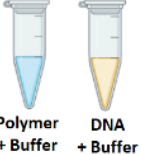



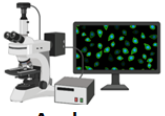


BrPERfect®

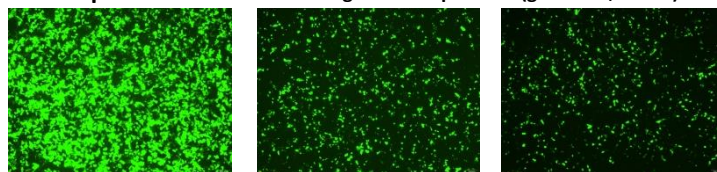
For superior transfection

- Superior efficacy - Out performs all current widely-used transfection products
- Extremely biocompatible - Excellent cell viability in a broad range of cells
- Easy to handle - Quick and easy protocol, serum-compatible,
- Great value - Only 0.1µl of reagent is needed for 10,000 cells

Day 0	 50-70% confluent	Prepare adherent /suspensions cells for transfection
Day 1	 Polymer + Buffer DNA + Buffer	Mix DNA and polymer with reaction buffer
	 Mix	Mix polymer solution into DNA solution
	 5-10 Incubate	Incubate at room temperature for 5-10 mins
	 Add to cells	Add to cells with full culture medium
Day 2-4	 Analyse	Analyse transfection result

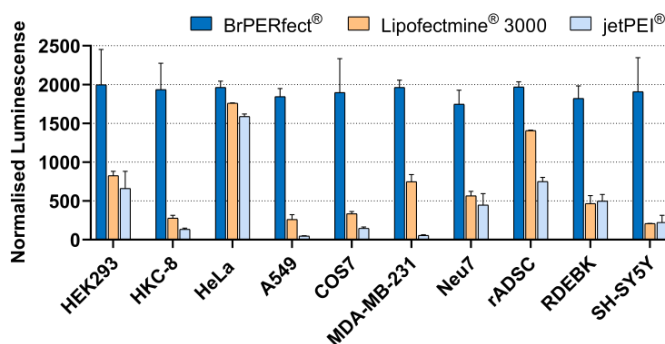
Our quick start guide is simple and easy to follow

• Example transfection following standard protocol (gwiz-GFP, HKC-8)



BrPERfect® Lipofectamine®3000 JetPEI®

• Superior transfection in a broad range of cells



• Extremely biocompatible

